

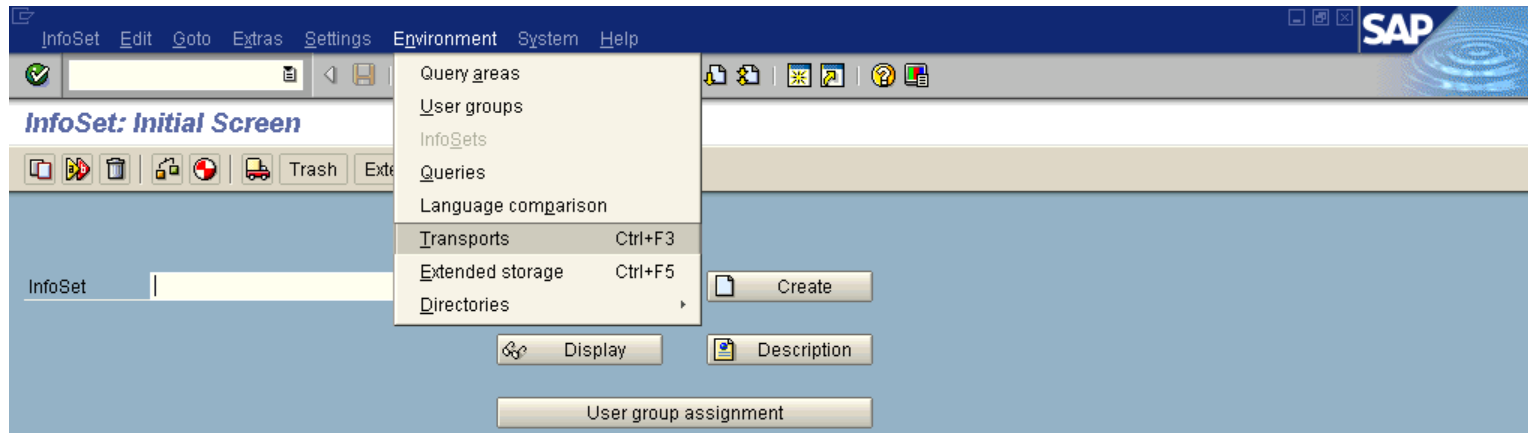
How to Export/Import R/3 Queries

The following are informal instructions on how to export R/3 queries from one client and import them into another client (e.g. export from PR1/400 and import into DR1/100). For the purposes of this exercise, the terms “export” and “download” are synonymous and the terms “import” and “upload” are also synonymous.

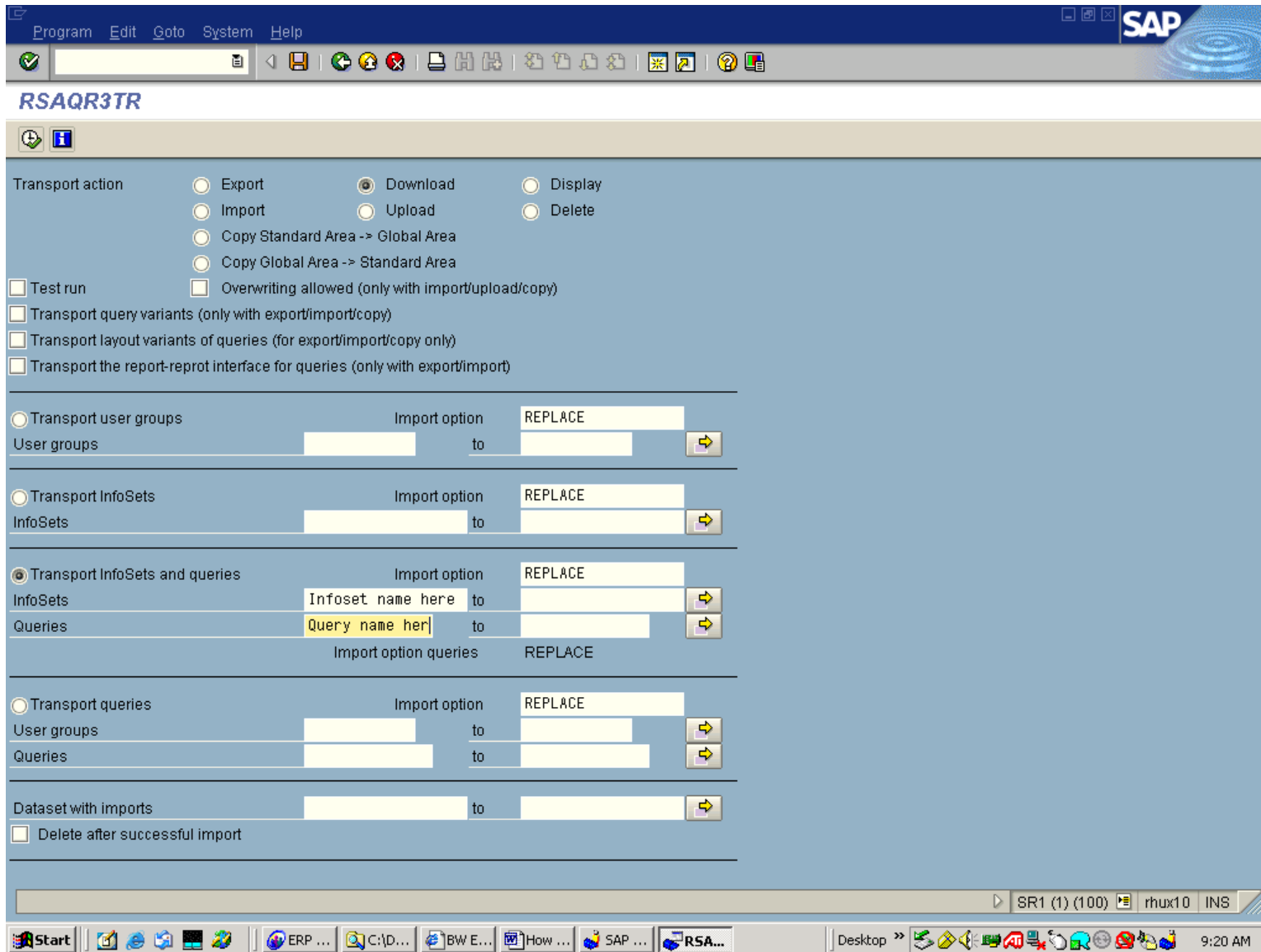
Note: In order to perform the export/import operations, the user must have access to SQ02 in the source and target clients.

Download (Export) Steps:

1. Execute SQ02 in the source client.
2. On the top menu bar, select Environment → Transports.



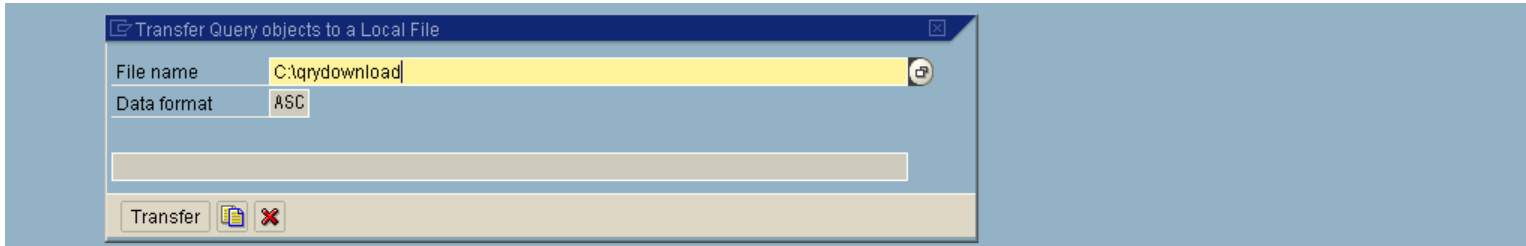
3. Select the “Download” radio button and deselect the “Test Run” checkbox.
4. If you want to download an entire user group, select the “Transport user groups” radio button and enter the user group name in the left hand field for user group.
5. If you want to download specific queries and infosets, select the “Transport Infosets and queries” radio button and enter the InfoSet name and Query name in the left hand fields as appropriate. I think if you just enter the query name, all associated infosets will be downloaded automatically.



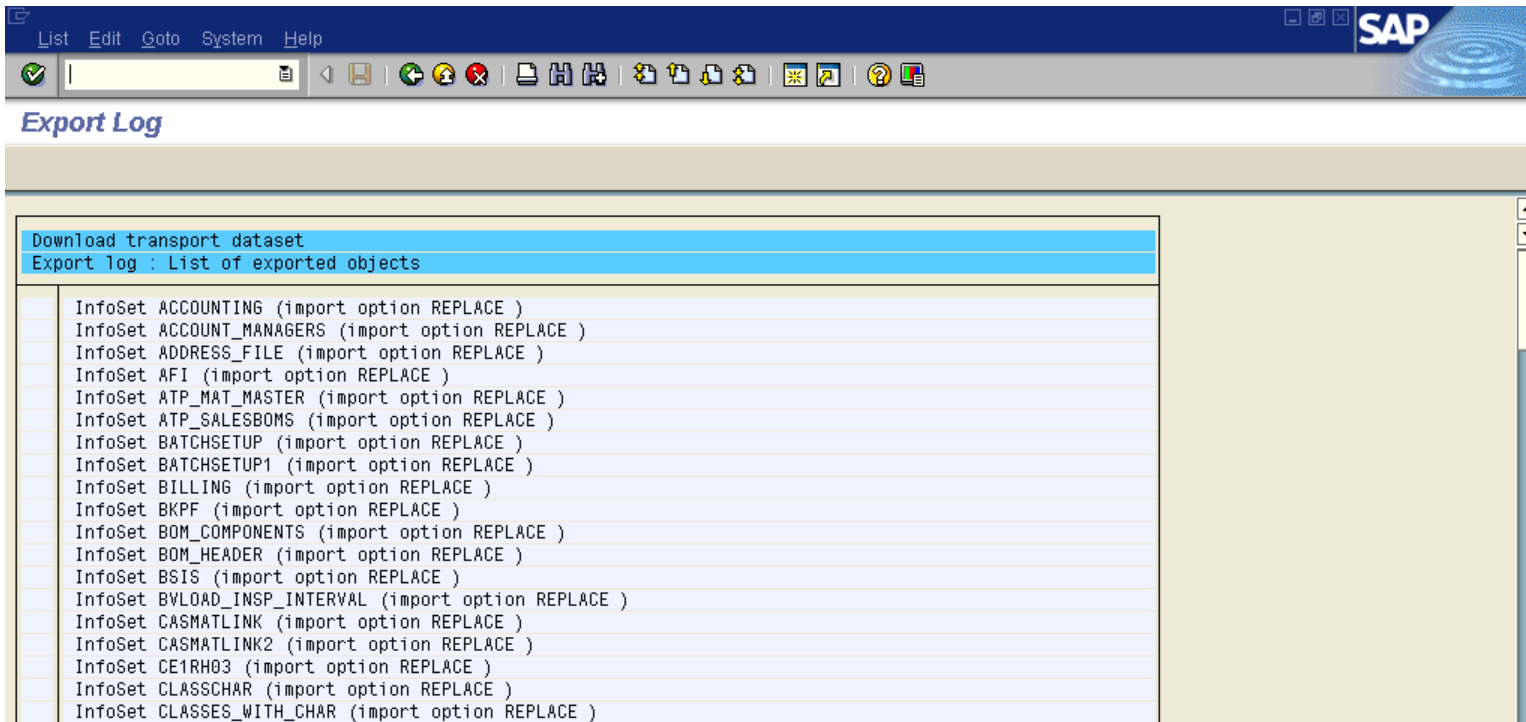
6. Once the selections have been made, execute the download by clicking on the execute button.



7. Provide a filename to save the download and click on the “Transfer” button. Depending upon system load, this may take several seconds or minutes. The file generated can be quite large.

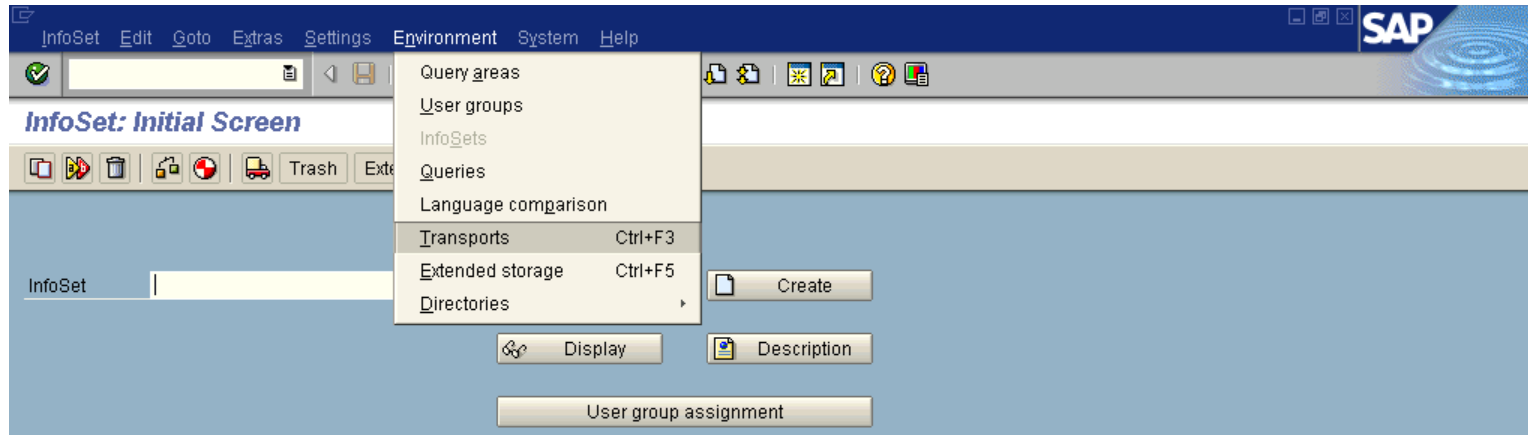


8. A log of your download will be displayed. You are done with the download (export) part of the process.

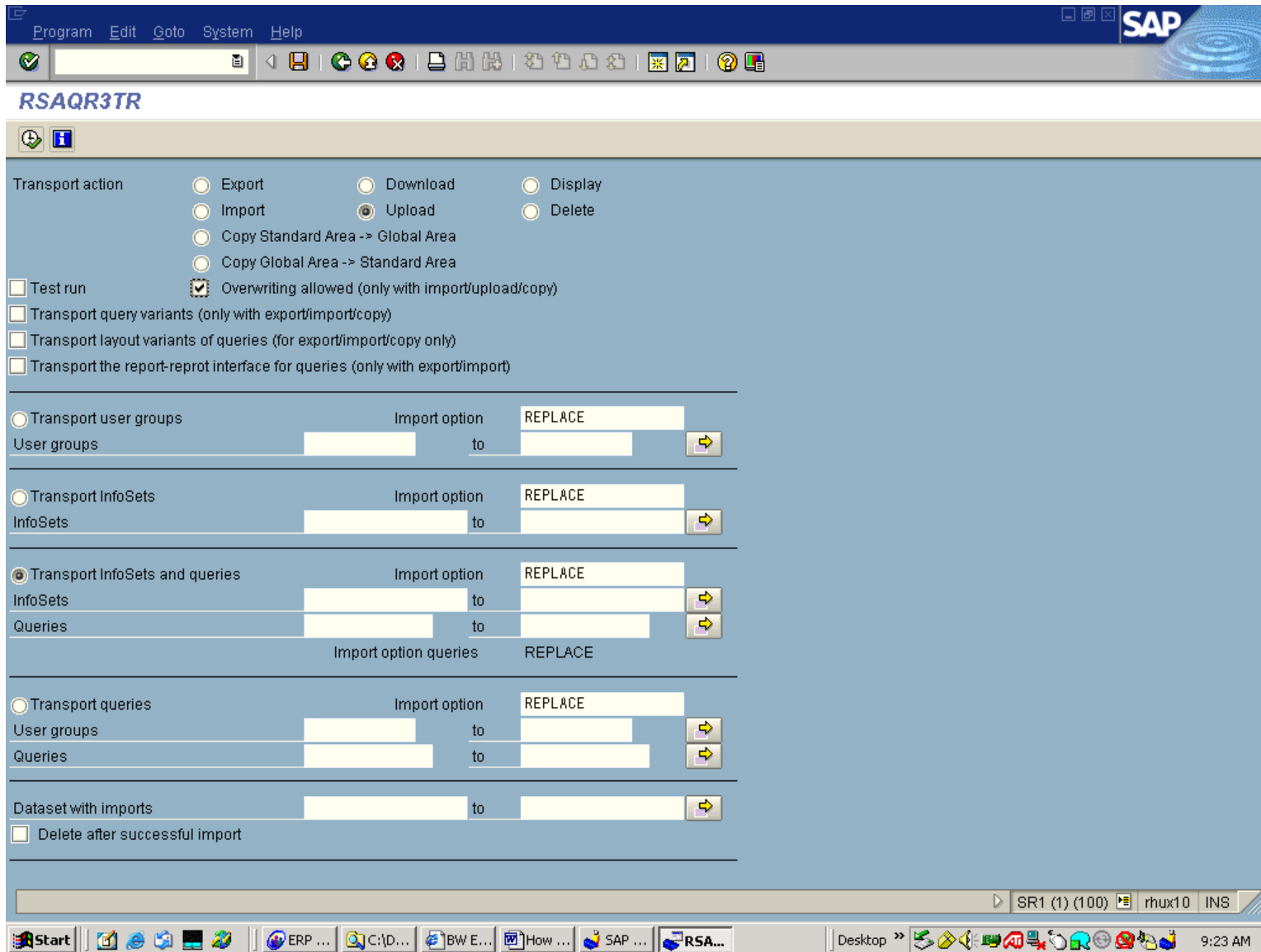


Upload (Import) Steps:

1. Execute SQ02 in the target client.
2. On the top menu bar, select Environment → Transports.



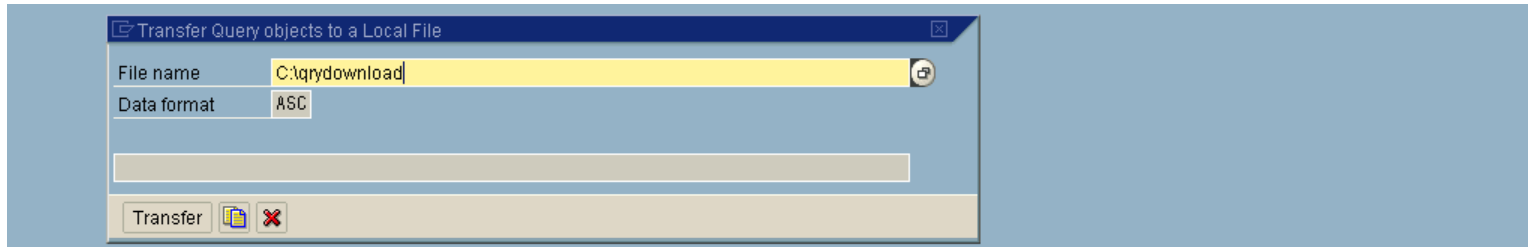
3. Select the “Upload” radio button, deselect “Test Run” checkbox, and select the “Overwriting allowed” checkbox. **Overwriting ensures that the downloaded query will overwrite the same query when uploading into the target client.**
4. If you want to upload an entire user group, select the “Transport user groups” radio button. You do not need to enter the user group name. The downloaded file has these details within it.
5. If you want to upload specific queries and infosets, select the “Transport Infosets and queries” radio button. You do not need to enter the InfoSet name and Query name. The downloaded file has these details within it.



6. Once the selections have been made, execute the download by clicking on the execute button.



7. Provide the filename that was created during the download and click on the “Transfer” button. Depending upon system load, this may take several seconds or minutes.



8. A log of your upload will be displayed. You are done with the upload (import) part of the process. **Make sure you check the log from the import for errors. It is possible for queries to fail during the upload process.**

Import log

```
Uploading transport dataset
Import log: List of imported objects

InfoSet ACCOUNTING (import option REPLACE )
W Existing InfoSet is overwritten
InfoSet ACCOUNTING imported
W InfoSet ACCOUNTING remains assigned to user group Z_FIN . Queries exist!
InfoSet ACCOUNT_MANAGERS (import option REPLACE )
W Existing InfoSet is overwritten
InfoSet ACCOUNT_MANAGERS imported
W InfoSet ACCOUNT_MANAGERS remains assigned to user group Z_SDP . Queries exist!
InfoSet ADDRESS_FILE (import option REPLACE )
W Existing InfoSet is overwritten
InfoSet ADDRESS_FILE imported
W InfoSet ADDRESS_FILE not assigned to a user group
InfoSet AFI (import option REPLACE )
W Existing InfoSet is overwritten
InfoSet AFI imported
Assignment of InfoSet AFI to user group EMUSER deleted
Assignment of InfoSet AFI to user group EMUSER accepted
InfoSet ATP_MAT_MASTER (import option REPLACE )
W Unit field MARA-MEINS will not be filled
```