



GREAVES
SINCE 1859

Testing: Unit Testing / User Manual



PREMIUM

Module: Production Planning

ENVIRONMENT

SYSTEM : SAP R/3 ECC 6.0

CLIENT : 200

UNIT TESTING SCENARIO

SCENARIO NUMBER : PP01-01

DESCRIPTION : Demand Management

PREPARED BY

NAME : K.H.Kannan

DATE : 19/11/2008

TEAM : Production Planning

APPROVED & TESTED BY

NAME : Nanhe Babu (PwC)

DATE :

TEAM : Production Planning



GREAVES
SINCE 1859

Testing: Unit Testing / User Manual



PREMIUM

Module: Production Planning

1. Transaction Code/ Path

Enter the menu path of the transaction code, which is going to be tested by the user.

Menu Path	Logistics → Production → Production Planning → Demand management → Planned Independent Requirements → MD61 Create
T. Code	MD61



SAP Easy Access



SAP Easy Access



- Folder Favorites
- Folder SAP menu
 - Folder Office
 - Folder Cross-Application Components
 - Folder Logistics
 - Folder Materials Management
 - Folder Sales and Distribution
 - Folder Logistics Execution
 - Folder Production
 - Folder Master Data
 - Folder SOP
 - Folder DRP
 - Folder Production Planning
 - Folder Materials Forecast
 - Folder Demand Management
 - Folder Planned Independent Requirements
 - MD61 - Create
 - MD62 - Change
 - MD63 - Display
 - MS65 - Requirements for Scenario
 - MS66 - Copy Simulated Dependent Reqmts
 - MD70 - Copy Total Forecast
 - Folder Evaluations
 - Folder Customer Requirements
 - Folder Master Data
 - Folder Environment
 - Folder Long-Term Planning
 - Folder MPS
 - Folder MRP
 - Folder Shop Floor Control
 - Folder Capacity Planning
 - Folder Repetitive Manufacturing
 - Folder KANBAN

Click on MD61 Create - To Enter PIR (Marketing Forecast)



Create Planned Independent Requirements: Initial Screen

Create Planned Independent Requirements: Initial Screen

User Parameters

Planned independent requirements for

Material

Product group

Reqmts Plan Dec08

MRP Area

Plant 1210

Define version

Version 00 REQUIREMENTS PLAN

Planning horizon

From 01.12.2008 To 31.12.2008 Planning period M Month

To Enter December 2008 plan from the above screen to enter the following:

Reqmts Plan -- To enter any text which you able to understand easily

Enter your Plant number

Planning horizon From To date

Planning period -- We can plan for Monthly, weekly and Daily

After entering above data Press Enter to go to next screen or click

Plnd ind. reqmts Create: Planning Table



Plnd ind. reqmts Create: Planning Table



Reqmts Plan DEC08


Planning start 01.12.2008 PIng finish 31.12.2008

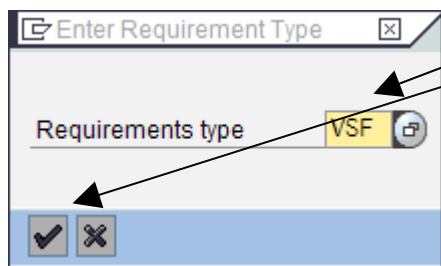
Table Items Sched. lines

Material	MRP A..V	A	BU	M 12.2008
245790	1210 00	✓		500
240791	1210 00	✓		100
	00	✓		
	00	✓		
	00	✓		
	00	✓		
	00	✓		
	00	✓		
	00	✓		
	00	✓		
	00	✓		
	00	✓		
	00	✓		
	00	✓		
	00	✓		
	00	✓		
	00	✓		
	00	✓		
	00	✓		
	00	✓		
	00	✓		



- Enter your FG material code _____
- Enter your MRP Plant _____
- Enter your Forecast _____
- After completing the above entries click save button in the screen _____

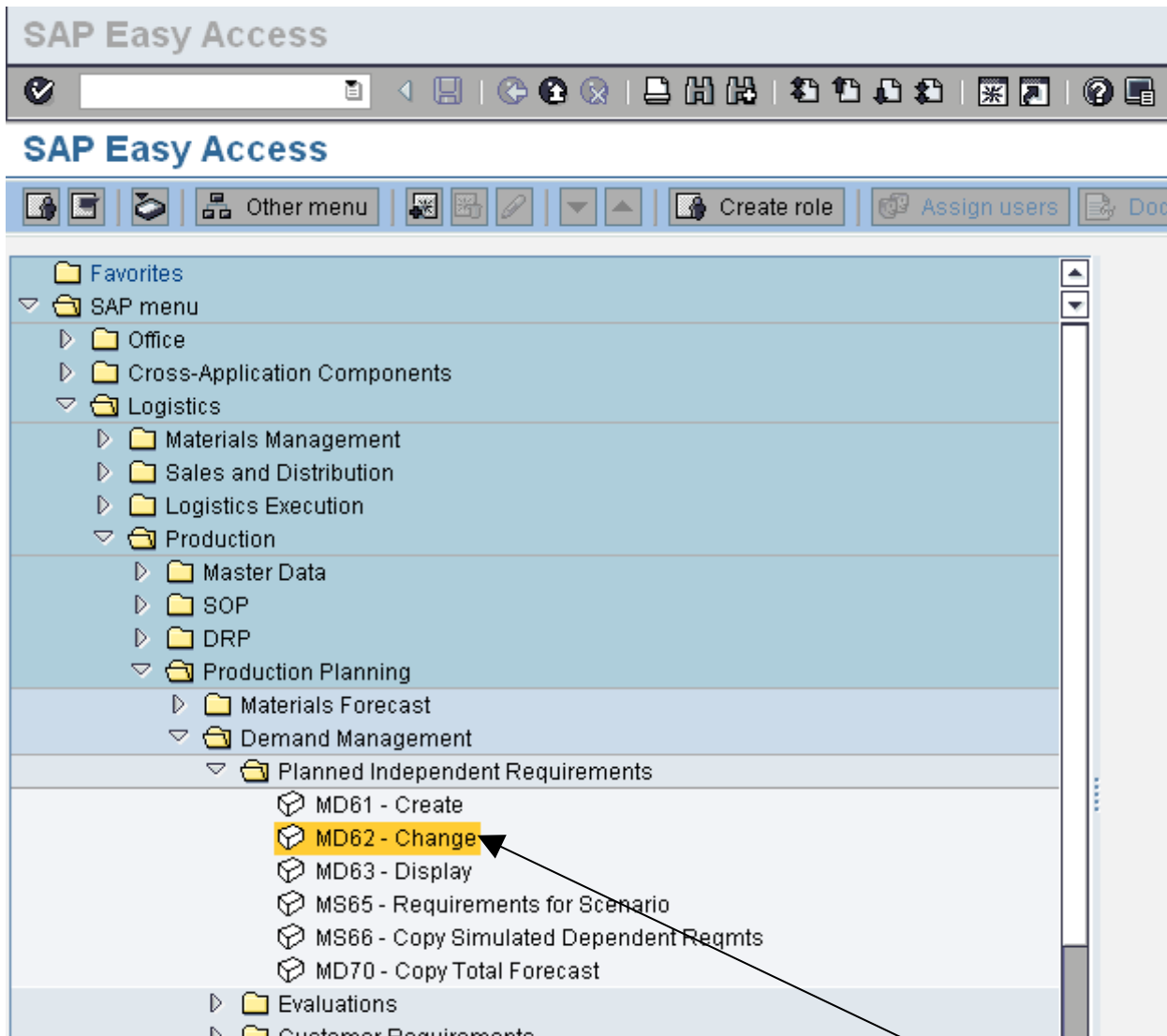
When you save the above screen it will ask Requirement type, enter VSF and click  in the Requirement type screen.



Now you have created your PIR for the Month of Dec'08.

2. Change PIR

Menu Path	Logistics → Production → Production Planning → Demand management → Planned Independent Requirements → MD62 Change
T. Code	MD62



To change the PIR qty (Increase, reduce and convert from Monthly to Weekly or Daily) select T. code MD62 as shown in above screen shot.



Change Planned Independent Requirements: Initial Screen



Change Planned Independent Requirements: Initial Screen

User Parameters

Planned independent requirements for

- Material
- Product group
- Reqmts Plan

MRP Area

Plant

Selection parameters

Requirements type

- Selected version REQUIREMENTS PLAN
- All active versions
- All active/inactive versions

Planning horizon

From To Planning period Month

Enter the values as shown in above screen and Enter.

Plnd ind. reqmts Change: Planning Table

Plnd ind. reqmts Change: Planning Table

Reqmts Plan **DEC08**

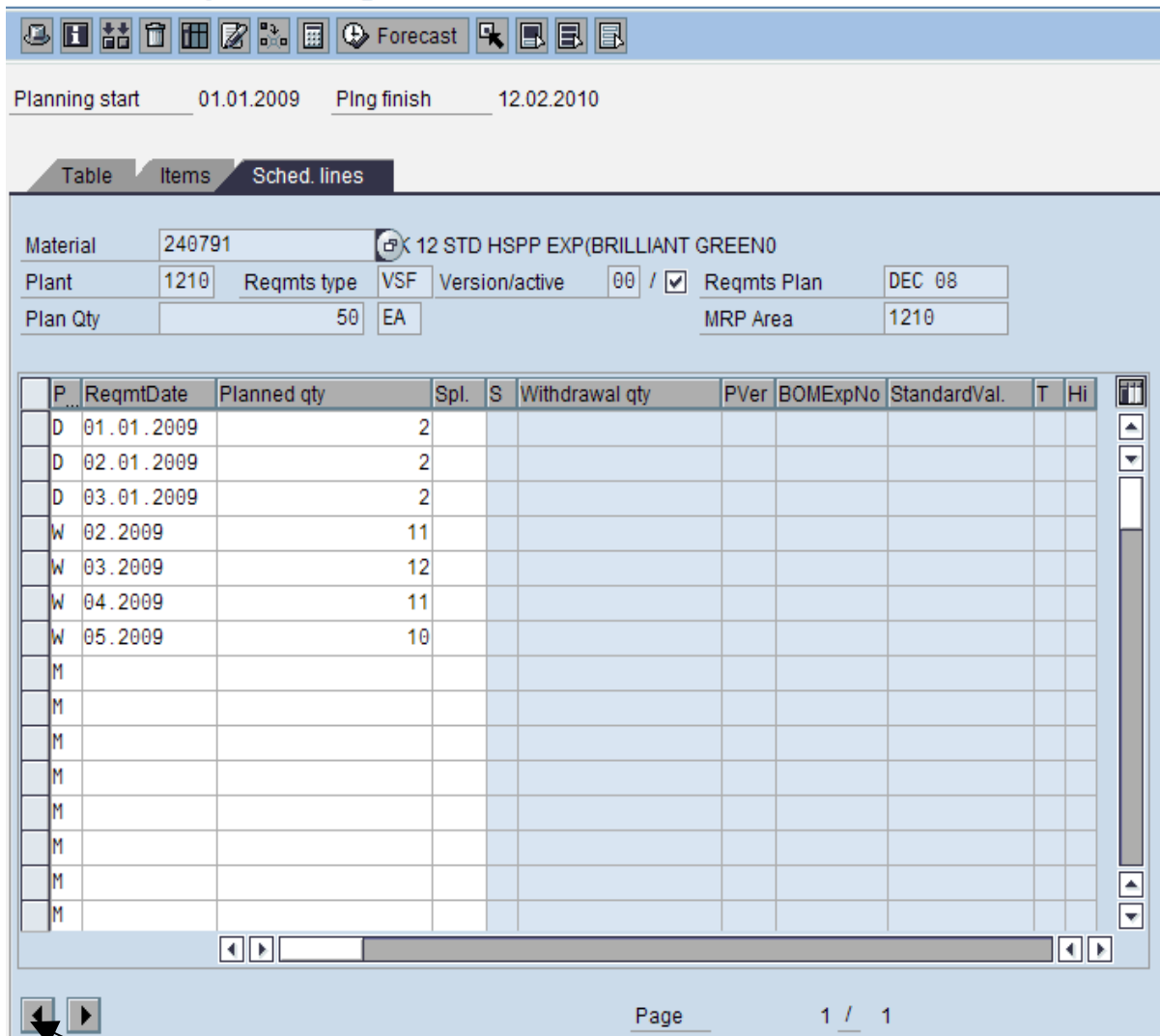
Planning start 01.12.2008 PIng finish 31.12.2008

Table Items Sched. lines

Material	MRP A	V	A	BU	M 12.2008
240791	1210	00	<input checked="" type="checkbox"/>	EA	50
245790	1210	00	<input checked="" type="checkbox"/>	EA	300
240790	1210	00	<input checked="" type="checkbox"/>		400
		00	<input checked="" type="checkbox"/>		
		00	<input checked="" type="checkbox"/>		
		00	<input checked="" type="checkbox"/>		

You can change the quantity whatever entered earlier and add the FG Material code and Qty. also
 To change the monthly reqmt. to weekly click the Sched. lines

Plnd ind. reqmts Change: Schedule Lines



Forecast

Planning start 01.01.2009 Png finish 12.02.2010

Table Items Sched. lines

Material 240791 12 STD HSPP EXP(BRILLIANT GREEN0)

Plant 1210 Reqmts type VSF Version/active 00 / Reqmts Plan DEC 08

Plan Qty 50 EA MRP Area 1210

P	ReqmtDate	Planned qty	Spl.	S	Withdrawal qty	PVer	BOMExpNo	StandardVal.	T	Hi
D	01.01.2009	2								
D	02.01.2009	2								
D	03.01.2009	2								
W	02.2009	11								
W	03.2009	12								
W	04.2009	11								
W	05.2009	10								
M										
M										
M										
M										
M										
M										
M										
M										

Page 1 / 1

The first line of week format is changed to Daily format.

Each line of weekly format you can convert to Daily format.

After convert this FG material code click on the arrow button next FG material code will appear

Repeat the above steps for all FG's and click Save button.



Plnd ind. reqmts Change: Item Screen

Material	Short Text	MRP A...	V	A	Req Plan	Plan Qty	BU	RTyp	CI	Str...	M...	MRP...	M...	S	H	T...
240791	MK 12 STD HSPP EXP(BI	1210	00	<input checked="" type="checkbox"/>	DEC 08	50 EA	VSF	4	40	ZD	100	<input checked="" type="checkbox"/>				

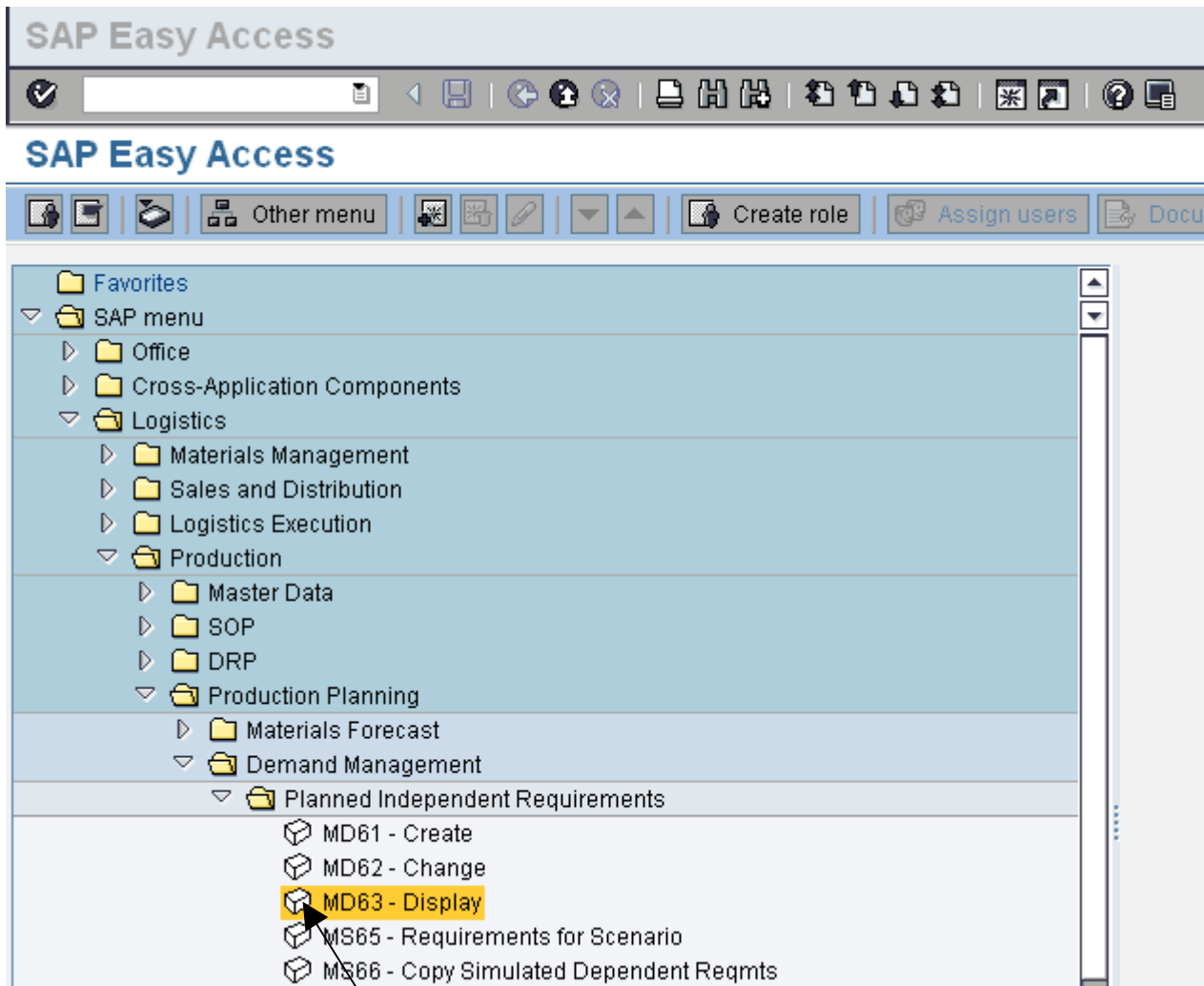
Consumption Indicator under **Items** Tab as shown above should be set as 4. Consumption Indicator controls which requirements (customer requirements, for example) are used to consume planned independent requirements.

Options available are

- 1 Consume only with customer requirements
- 2 Only consume reservations, dependent requirements
- 3 Consume customer reqmts, reserv., dependent reqmts
- 4 Flexible Consumption for Different MRP Elements (BAdI) No Allocation

2. Display PIR

Menu Path	Logistics → Production → Production Planning → Demand management → Planned Independent Requirements → MD63 Display
T. Code	MD63



To view the PIR qty select T. code MD63 as shown in above screen shot.



Display Planned Independent Requirements: Initial Screen



Display Planned Independent Requirements: Initial Screen

User Parameters

Planned independent requirements for

- Material
- Product group
- Reqmts Plan

MRP Area

Plant

Selection parameters

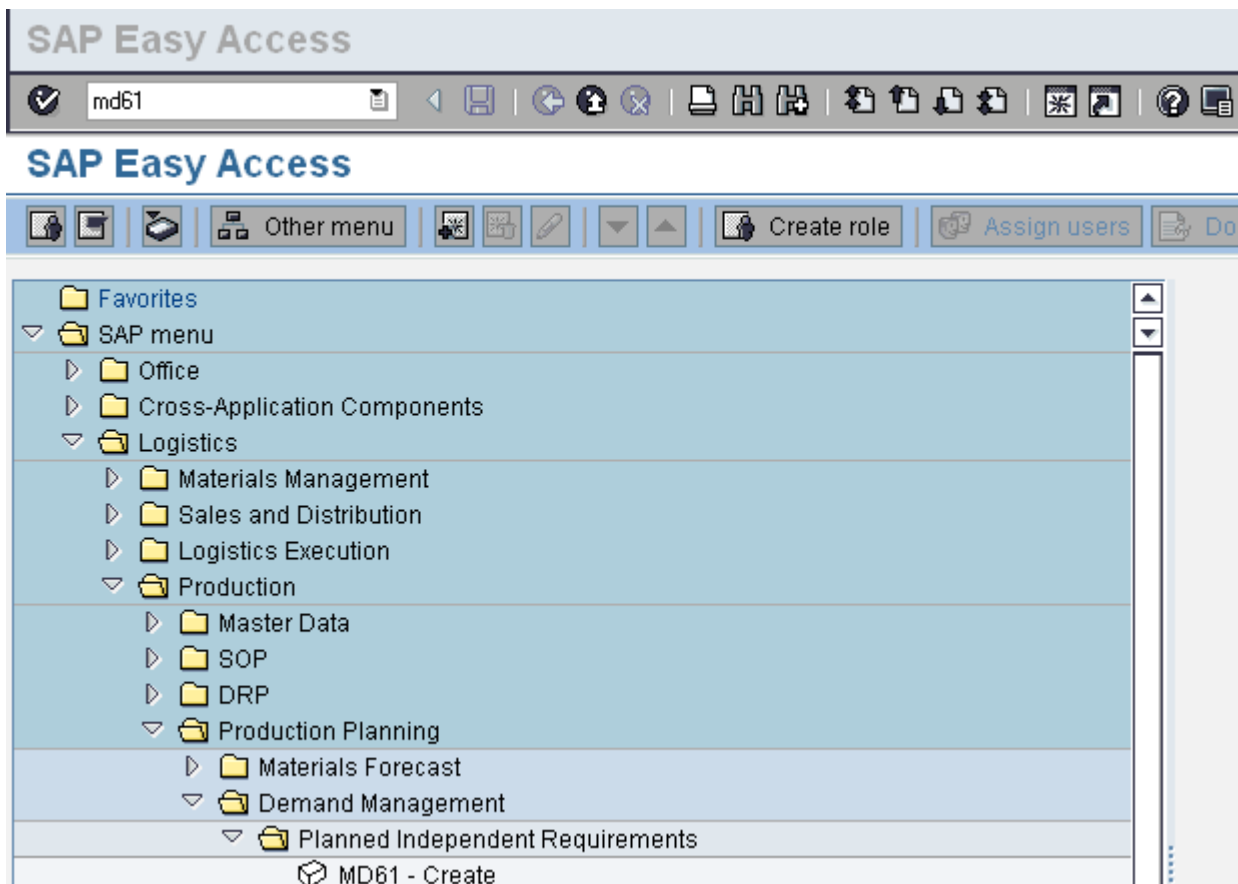
Requirements type

- Selected version REQUIREMENTS PLAN
- All active versions
- All active/inactive versions

Planning horizon

From To

Fill the relevant field as shown in above and Enter



To go to the process screen instead of menu path you can enter the T. code in the window which is available in Top left and press Enter

In Material Master of FG, MRP 3 view, Planning Tab:

Strategy group - The strategy group groups all the planning strategies that can be used for a particular material. The planning strategy represents the procedure used for planning a material and is (technically speaking) controlled by the MRP types. Depending upon discussion on MRP, Strategy '40' – Planning with final assembly needs to be set.

Consumption mode - The consumption mode controls the direction on the time axis in which the system consumes requirements. Depending upon discussion on MRP, '2 – backward / forward consumption needs to be set.

Fwd. Consumption per. - Determines the consumption period (in workdays) for forward consumption. In forward consumption, sales orders, dependent requirements or material reservations consume planned independent requirements that lie within the consumption period after the requirements date. Depending upon discussion on MRP, '90' (it can be plant specific)

Bwd. Consumption per. - Determines the consumption period (in workdays) for backward consumption. Using backward consumption, sales orders, dependent requirements, or material reservations are assigned to and consume planned independent requirement quantities which lie within the consumption period and before the requirements date. Depending upon discussion on MRP, '90' (it can be plant specific)

Requirements type – Depending upon Strategy group entered, since its '40', 'VSF' – Planning with final assembly will be displayed.

There must be situation wherein one wants to keep PIR / demand inactive, in order to check the Stock & requirements which could be copied in Active version to get MRP data. Following process should be considered:

1) Create a plan with simulation version 02 with MD61

Create Planned Independent Requirements: Initial Screen

User Parameters

Planned independent requirements for

Product group

Reqmts Plan

MRP Area

Plant

Define version

Version Simulation 2

Planning horizon

From To Planning period Month

Enter the plan in the table without active indicator

Plnd ind. reqmts Create: Planning Table

Reqmts Plan

Planning start Png finish

Table Items Sched. lines

Material	MRP A	V	A	BU	M 01.2009	M 02.2009
123506300017		02	<input type="checkbox"/>		10	
		02	<input checked="" type="checkbox"/>			
		02	<input checked="" type="checkbox"/>			

2) Create planning scenario in MS31

Enter 3 digit id and description

Tick on the long term planning

Create Planning Scenario

Planning Scenario Simulation MRP run w/o Stock,Firm Recpt.

Define default settings for control parameters

- Long-term planning
- Gross long-term planning
- Short-term simulation
- Copy parameters from scenario

Enter the period from & to dates as mentioned in the PIR

Tick on the control parameters which you want take into consideration in the planning run.

Select BOM selection ID as 01

Change Planning Scenario - Control Data

Planned Independent Requirements	Plants	Cancel Release	Activate Independent Requirements
Planning Scenario	<input type="text" value="200"/> Simulation MRP run w/o Stock,Firm Recpt.		
Status	<input type="text" value="2"/> Released		
Planning period for indep. requirements			
From	<input type="text" value="26.12.2008"/>	To	<input type="text" value="31.12.2009"/>
Control parameters			
Opening stock	<input type="checkbox"/> No opening stock		
<input checked="" type="checkbox"/> Dep. reqmts for reorder point materials			
<input type="checkbox"/> Consider sales orders			
<input type="checkbox"/> Switch off planning time fence			
<input type="checkbox"/> Use direct production			
<input type="checkbox"/> Use make-to-order and project planning			
Gross requirements planning			
<input type="checkbox"/> Switch off scrap calculation			
<input type="checkbox"/> Use gross lot size	<input type="checkbox"/>		
Receipts			
<input type="checkbox"/> Include firm recpts			
<input type="checkbox"/> Include firm purchase requisitions			
<input type="checkbox"/> Include firm planned orders			
BOM explosion			
BOM selection ID	<input type="text" value="01"/>		

After filling the required information click on assign plant tab, enter the plant code.

Assign the PIR by clicking on the assigning the PIR tab.

Enter version 02

Enter From and

To period

Click on release & save tab say yes

This will generate the planning scenario

3) Take planning run with MS01

Enter planning scenario , plant code and required fields.

Long-Term Planning Run

Planning Scenario	<input checked="" type="checkbox"/>
Scope of planning	
Plant	

MRP control parameters		
Processing key	NETCH	Net Change in Total Horizon
Create MRP list	3	No MRP list
Planning mode	1	Adapt planning data (normal mode)
Scheduling	1	Determination of Basic Dates for Planned
Include firm planned orders	1	Use setting in planning scenario

Process control parameters	
<input type="checkbox"/> Parallel processing	
<input type="checkbox"/> Display material list	

User exit: select materials for planning	
User exit key	
User exit parameter	

Required fields:

Processing key, Create MRP list, Planning mode, Scheduling are fields which could be entered similar to ones while running actual MRP.

Include firm planned order: This selection controls whether firmed planned orders are to be copied from operative planning to long-term planning.

The following options are available:

Include firm planned orders	Short Descript.
1	Use setting in planning scenario
2	Copy firm planned orders from operative planning
3	Do not copy firm planned orders from operative planning

The setting made in the planning scenario is used.

The firmed planned orders are copied if the Use firmed planned orders selection is set. The firmed planned orders are not copied if the Use firmed planned orders selection is not set.

The system copies firmed planned orders from operative planning regardless of the setting in the planning scenario.

The system does not copy firmed planned orders from operative planning regardless of the setting in the planning scenario.

Process Control Parameters

- Parallel processing
- Display material list

Parallel processing - By using parallel processing procedures, you can significantly improve the total planning run.

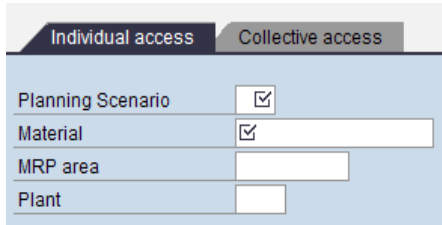
Display material list - Instructs the system to create a list of the planned materials after the planning run.

User exit: select materials for planning

Depending upon user exit defined & in that selection of user exit, Long Term Planning Run will be executed.

4) Result evaluation with MS04

Enter planning scenario , Material and plant code/MRP area in Individual access.



Individual access / Collective access

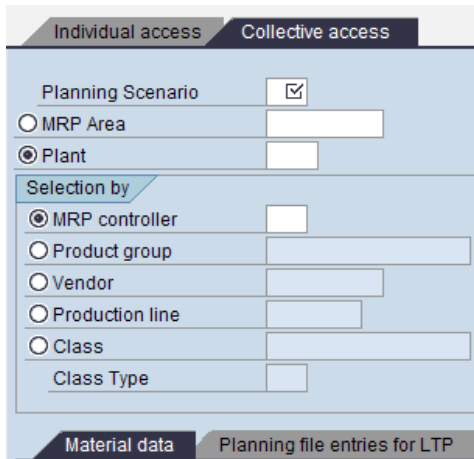
Planning Scenario

Material

MRP area

Plant

In Collective access,



Individual access / Collective access

Planning Scenario

MRP Area

Plant

Selection by

MRP controller

Product group

Vendor

Production line

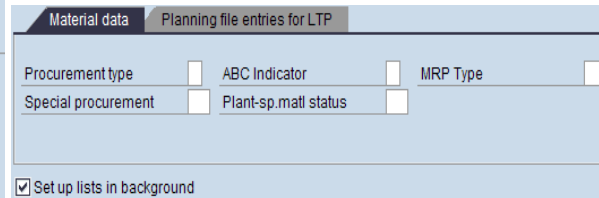
Class

Class Type

Material data / Planning file entries for LTP

One needs to enter Planning Scenario, MRP Area/Plant & further selection by MRP controller, Product group, Vendor, Production line or Class – Class Type.

In Material data tab



Material data / Planning file entries for LTP

Procurement type ABC Indicator MRP Type

Special procurement Plant-sp.matl status

Set up lists in background


One can further select either fields.

In Planning file entries for LTP, selection can be either

- All materials ————— Determines that the material is taken into account in the net change planning run
- Only materials flagged for MRP (NETCH) ————— Controls whether the system is only to select materials that are not taken into account in net change planning
- Only materials not flagged for MRP (NETCH)

5) To convert the non active planning version into active MS64 – Copy Version

Copy Version



Selection

Plant	<input type="text" value="1110"/>	to	<input type="text"/>	↔
MRP area	<input type="text"/>	to	<input type="text"/>	↔
Material	<input type="text"/>	to	<input type="text"/>	↔
Requirements Type	<input type="text"/>	to	<input type="text"/>	↔

Selection period

Date	<input type="text" value="06.01.2009"/>	To	<input type="text" value="06.02.2009"/>
------	---	----	---

Version

Source version	<input type="text" value="02"/>	Target version	<input type="text" value="00"/>
----------------	---------------------------------	----------------	---------------------------------

Reqmts Plan

Source reqmts plan	<input type="text"/>	Target reqmts plan	<input type="text"/>
--------------------	----------------------	--------------------	----------------------

Change target version

Change quantity	<input type="text"/>	<input type="text"/>
Displace by	<input type="text"/>	Month(s)

Reqs Parameters

- Target version active
- History
- Copy configuration data

Mode

- No database changes (simulation)

Output Options

<input checked="" type="checkbox"/> Results List	Output Format	<input checked="" type="radio"/> Detailed List <input type="radio"/> Only Faulty Records <input type="radio"/> W/o Sched. Lines
--	---------------	---

Enter the selection period Date & to
Source version 02 (Defined in Step 1 'Simulation 2')
Target version 00 ('REQUIREMENTS PLAN')

Tick on target version active - This selection determines whether the version is active, that is, relevant to MRP. In long-term planning, the system first plans with versions that are not active as the results of the long-term planning are of a simulative nature only. If you use the report for the operative planning, you can use this selection to set the copied version to active, thus, making it relevant for planning.

Tick on history

Mode


Mode

- No database changes (simulation)

First take a test run & putting a tick on no database change (simulation). Then take a actual run by removing the tick

Tick on result list & detail list

Output Detailed Lists - If you choose Detailed List, all selected items, that is, transferred, incorrect and untransferred items are displayed in the results list. Header information and any transferred schedule lines, as well as error messages are displayed for these items.

Output Incorrect Items Only - If you choose Incorrect Items Only, the results list only displays data for which errors occurred during transfer to planning. Items with errors are displayed with the status  (red).

Output Without Schedule Lines - If you choose Without Schedule Lines, the results list only contains header information for all selected items (including material, plant and MRP area) and error messages